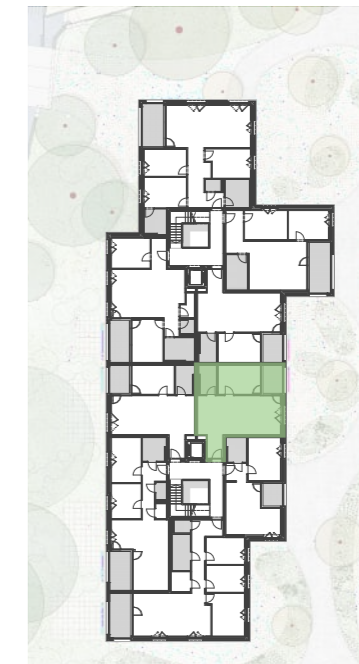










TOP 3.3 | E1



TOP 3.3/E1

OBERGESCHOSS 3

ZIMMER	2
WOHNFLÄCHE	52,90 m ²
LOGGIA	6,10 m ²

-  PARKETT
-  FLIESEN
-  BETONPLATTEN
-  KIESBELAG IN PRIVATGARTEN
-  KÜHLSCHRANKANSCHLUSS
-  GESCHIRRPÜLERANSCHLUSS

